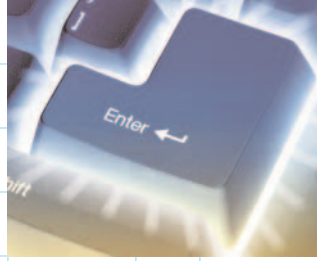
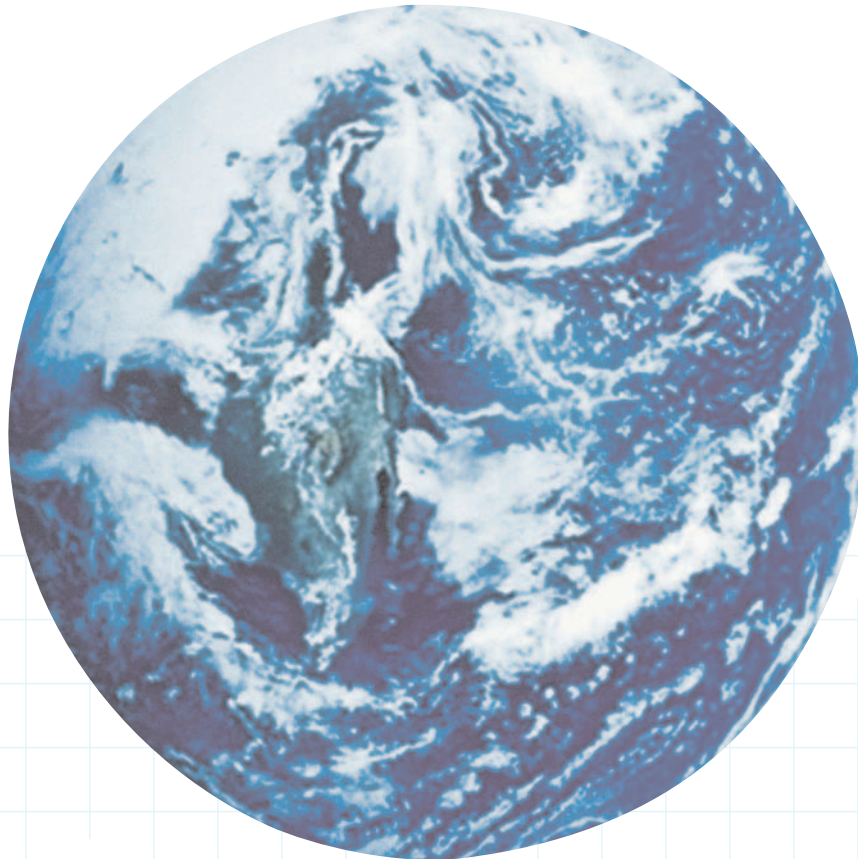


Savin GlobalScan

> DOCUMENT CAPTURE
AND MANAGEMENT FOR
ENTERPRISE ENVIRONMENTS



Savin GlobalScan



savin[®]

One Product For All

Major corporations, government agencies and service providers are facing the difficult task of managing the enormous quantity of documents generated and disseminated from both national and global locations.

While technology has improved productivity in the workplace, managing the capture, distribution, and retrieval of information has become more complex.

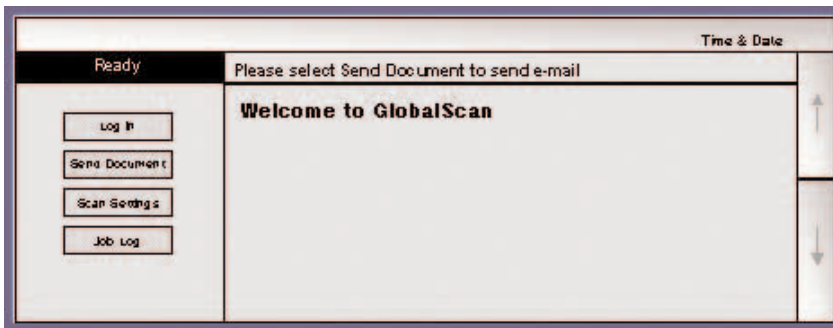
Savin can offer enterprise environments both optimum efficiency and flexibility in capturing documents and distributing them, as well as storing and retrieving them. With Savin's GlobalScan Server, productivity increases, efficiency is maximized, accuracy is preserved and security guaranteed.

Sophisticated options address key applications as your company's business evolves...and all made simple through Savin's advanced technology.

And Savin continues to help you expand your application possibilities by expanding functionality of your MFP with GlobalScan options.

Through strategic alliances with industry leaders, Savin's GlobalScan Server provides flexibility to large organizations already utilizing industry proven document management systems.

Be it data capture, document distribution, back-end filing and retrieval or scanning to fax locations, GlobalScan has the right solution for your business needs.



GlobalScan Main Menu



Savin 2560 Control Panel

GlobalScan Server

Savin's GlobalScan Server acts as a digital document routing system that accepts scanned documents and creates digital files for electronic transmission over your network.

GlobalScan turns your Savin Multi-Function Product (MFP) into a network scanner providing efficient and timely document capture and distribution. All functions can be accessed with one trip to the MFP Operation Panel.

Your Business Needs

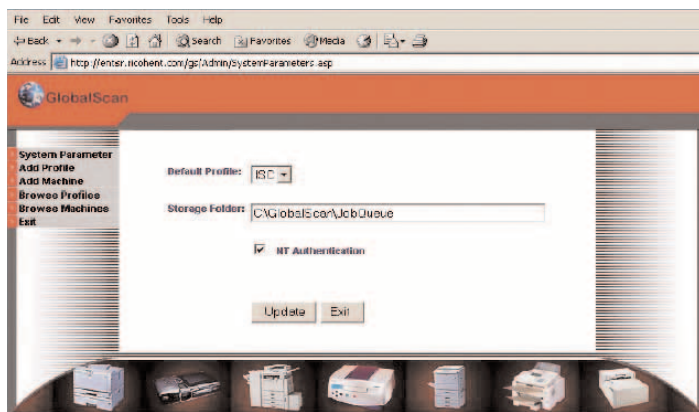
GlobalScan Highlights

Network Scanning

- Up to 100 MFP's connected through one (1) server
- Saves you the high cost of multiple desktop scanners
- Scanner, copier, printer and fax operations are combined into one office machine
- No additional network connections required

Electronic Document Distribution

- Rapid distribution of scanned documents to e-mail addresses and/or network folders
- Optional Document Management utilities for file storage and fax management



GlobalScan Admin Menu

Company E-Mail Address Book Access

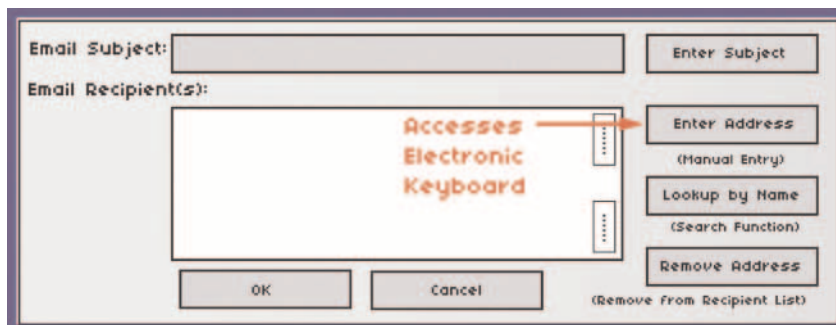
- Unlimited addresses can be accessed from your company's E-Mail system by accessing the company's E-Mail Address Book and/or multiple databases
- Addresses are displayed at MFP Operation Panel
- Changes made to your E-Mail server are reflected instantly through the MFP

Ad Hoc E-Mail Entry

- Entry of any valid Internet E-Mail address from the MFP Front Panel

Security

- Network Log In Authentication
- Scanned documents are encrypted with 128 bit encryption



GlobalScan Ad Hoc E-Mail Address Entry

Scan Using Your Company/Personal Address Book

Savin realizes the administrative burden of pre-registering addresses and also, how limiting the number of destinations can contradict your productivity efforts.

Savin's GlobalScan Server uses LDAP, a protocol directory service that runs over TCP/IP lines. It can be configured to serve multiple databases at the same time.

The GlobalScan Server does not maintain its own address book. It uses your company's E-Mail Address Book to access each user or group. This access is available directly from the MFP Front Operation Panel.

Ad Hoc E-Mail Address Entry

The combination of GlobalScan and Savin Multi-Function Products allows users to scan to any valid Internet E-mail address through the Front Panel.

Recipients do not need to be pre-registered in any address book. Single or multiple addresses can be entered manually at the MFP by accessing the pop-up QWERTY style electronic keyboard on the MFP. The address is then transmitted along with the scanned documents to the GlobalScan Server, which then sends the E-Mail to the appropriate party.

Savin GlobalScan

Requirements and Specifications

GLOBALSCAN SERVER SPECIFICATIONS/REQUIREMENTS

Windows 2000 Server
IIS 5.0 with ADSI 2.5 and MSXML 3.0 Active X Controls
TCP/IP Network Access
Access to Corporate E-Mail Address Book via LDAP
1 GHZ Processor
512 MB RAM
40 GB Hard Drive
E-Mail capability through one or more of the following:
 Lotus Notes
 Microsoft Exchange
 Any SMTP Server
Up to 100 MFPs supported by one GlobalScan Server

MFP REQUIREMENTS

Savin 2522, 2527, 2535, 2545, 2560, 2575, SLP38cS
Additional RAM Memory
Network Interface Board (NIB)
Local Hard Drive
TCP/IP Network Access

AUTHENTICATION PROTOCOLS SUPPORTED

LDAP
Windows NT/2000

PROTOCOLS SUPPORTED

GlobalScan Server:
TCP/IP
HTTP/HTTPS
LDAP
SMTP, XML, ADSI
Multi-Function Products:
TCP/IP
HTTP/HTTPS

FILE FORMATS SUPPORTED

Standard:
Multipage TIFF
JPEG
PDF Image
Optional:
PDF Image Plus Text
PDF Text
XLS (Microsoft® Excel)
RTF (Microsoft® Word)

FILE DESTINATIONS

E-Mail (Address Book, Ad-Hoc)
Network Folders (Unlimited)

Strategic Alliances Extend The Power Of GlobalScan Servers

Ask your authorized sales representative for details regarding the optional plug-ins available to meet all of your expanding business needs.

For more information contact your authorized Savin sales location.



Savin

Savin Corporation Stamford, Connecticut 06904 ©2003 Savin Corporation.
SAVIN® is a registered trademark of Savin Corporation. All other trademarks are the property of their respective owners. Product specifications subject to change without notice. Printed in U.S.A. (S1705) 35M 1/03